

« THE METALLIC EDGE »

HISTORY

Metallic Building Company is one of the oldest companies in the metal building industry. Established in 1946, Metallic was one of the five original founders of the Metal Building Manufacturers Association. Some of its employees date back to Metallic's roots in the 1950s and some current builder relationships carry back to the 1960s.



After a series of corporate arrangements, Metallic was purchased in 1989 by NCI Building Systems. NCI, already experiencing tremendous

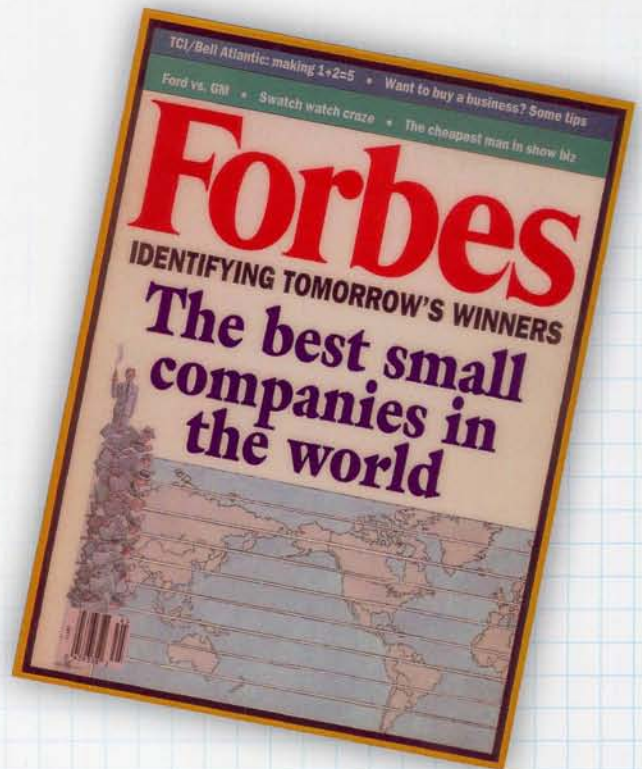
growth, became a public company in 1992. Since going public, NCI has become one of the largest and most well-respected manufacturers of custom metal building systems.

Over the last decade, NCI has been listed four times as one of Forbes Magazine's "Best Small Companies in America" and as a Business Week magazine "Hot Growth Company." Metal Construction News has honored NCI's contributions to the industry by naming it the "Top Industry Marketer." In the financial community, NCI continues to receive accolades for its achievements.

Today, because of Metallic's unparalleled industry reputation, top quality personnel are attracted to the organization. Metallic employs some of the highest

quality professional, technical and manufacturing personnel in the industry. Superior personnel ensure that Metallic products are designed with sound engineering practices, detailed correctly and manufactured with the utmost quality control.

The corporation has grown to over 4,000 employees and in excess of 3.5 million square feet of manufacturing space in 36 plants strategically located across the country.



PRODUCT DEVELOPMENT

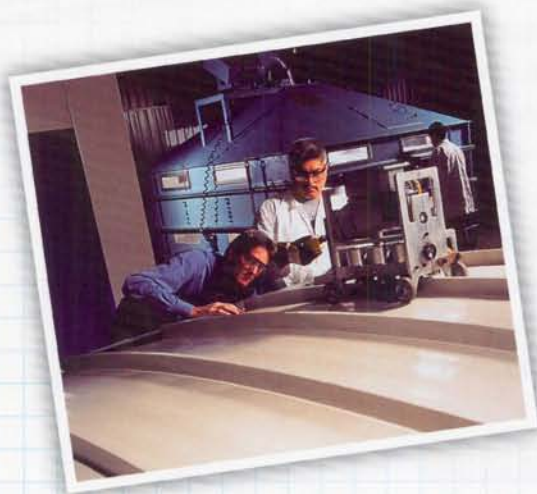
Since the beginning, Metallic and NCI have consistently improved their product lines and added new features and products to become the innovative leader in the industry. With the advent of our patented state of the art Long Bay System (LBS), the

« THE METALLIC EDGE »

Class TV Structural Shop, Light Commercial Buildings and advancements in IPS insulated panels, Metallic has enabled its builders to offer building solutions for any construction environment.

With 35 plants nationwide, along with an unbelievable breadth of steel products, NCI is the largest purchaser of steel in the construction industry. And, as such, passes the volume purchasing savings on to our builders and customers.

Product and service breadth and shipping point locations are the essence of the Metallic Edge.



BUILDER ORGANIZATION

Metallic Building Company is dedicated to supporting its Authorized Builders with strong marketing, competitive



pricing, quality manufacturing and outstanding service. Over the past year Metallic announced 22 new and improved products and services to its customers.

Being the industry leader requires forward thinking personnel to pilot, produce and promote revolutionary products and procedures. Our goal is to stay ahead of the competition and to lead the metal building industry in products, profit and growth.

TECHNOLOGY

Metallic's PRISM Pricing Program pioneered computer pricing to enable builders to price projects and get accurate anchor bolt drawings. Flexible and user friendly, PRISM allows the builder/designer to seek the most efficient design to achieve the most competitive price. The Metallic drafting team works full time to continually enhance PRISM's capabilities to help builders deal with the changing market.



SYNERGY

The executive management at Metallic are experts in integrating companies into the NCI family. From coil coating and fabricated steel to roll-up doors and insulated panels, if a customer has a demand for a steel product in the construction industry, Metallic can provide it.

« THE METALLIC EDGE »

NCI's decade of growth has brought together some of the best companies in our industry. (The 1998 acquisition of MBCI and its affiliates created the opportunity to establish economic advantages with the major steel producers.) A true single source supplier had been born.

Our large-scale manufacturing capabilities reduce production costs and allow for centralized purchasing, marketing and administrative efficiencies.

HUB AND SPOKE PRODUCTION

Our unique "hub and spoke" strategy of manufacturing shrinks the average radius of shipping, which reduces distribution cost and time. This strategy allows efficient utilization of our truck fleet with uniform loading of outbound and inbound shipments. This production philosophy brings the source of supply closer to the customer and greatly reduces the overall cost of production.



RESEARCH & DEVELOPMENT

Metallic has shown its dedication to product testing. We have built our own authorized replicas of the Underwriters Laboratory (UL) and Factory Mutual (FM) test chambers in our Houston, Texas

Research and Development facility. The company's 13,000 square feet of research and development space underscores

the company's dedication to new and superior building products. Our tests give us a depth of knowledge about our products that is unequaled in the industry. Our in-depth testing helps guarantee the accuracy of our design and ensures that our products satisfy or exceed building code requirements.



TRAINING

Metallic has one of the only training centers in the metal building industry. The 7,600 square foot hands-on facility allows up to four 75-person classes to operate simultaneously. An open 2-story section enables

instructors and students to actually erect a one-story, light frame building - complete with wall and roof panels.



« THE METALLIC EDGE »

Training in nearly all facets of our product offering is available. The training center provides space for all schools and seminars, from sales and software training to product and management seminars. Our in-depth training program shows our commitment not only to quality products, but also to a quality project.

CORPORATE ACCOUNTS

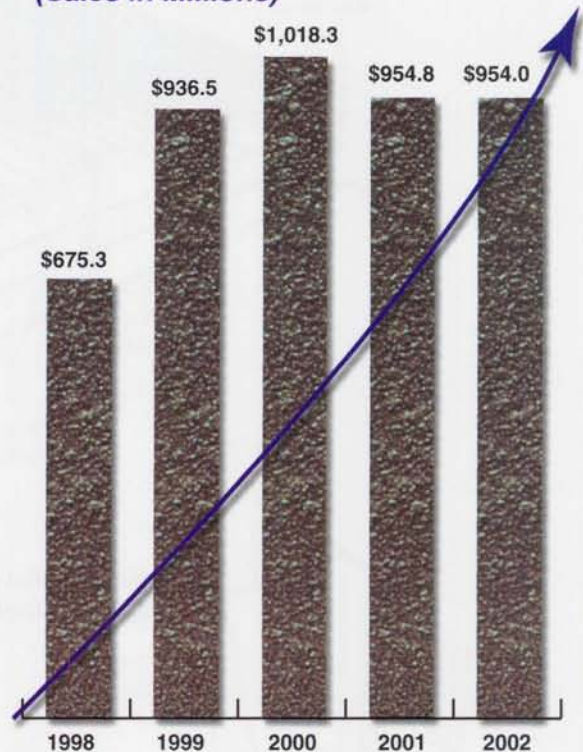
In a further effort to establish Metallic builders in the national realm, the Corporate Accounts division was launched to attract Fortune 500 corporations and some of the largest general contractors, architectural and engineering firms in the United States. This is the community that is and will be involved in most of the largest construction projects available in the country. This team of professionals will bring projects to Metallic builders for their construction expertise and knowledge of local codes and requirements.



THE METALLIC EDGE

Metallic Building Company management has time and time again proven that they have the vision to remain the most innovative company in the industry. For over 50 years the Metallic name has been a mainstay in the metal building industry. Metallic's parent company, NCI, is still the leader in financial growth, customer service and product breadth and innovation - ***Does Metallic have the edge? You decide.***

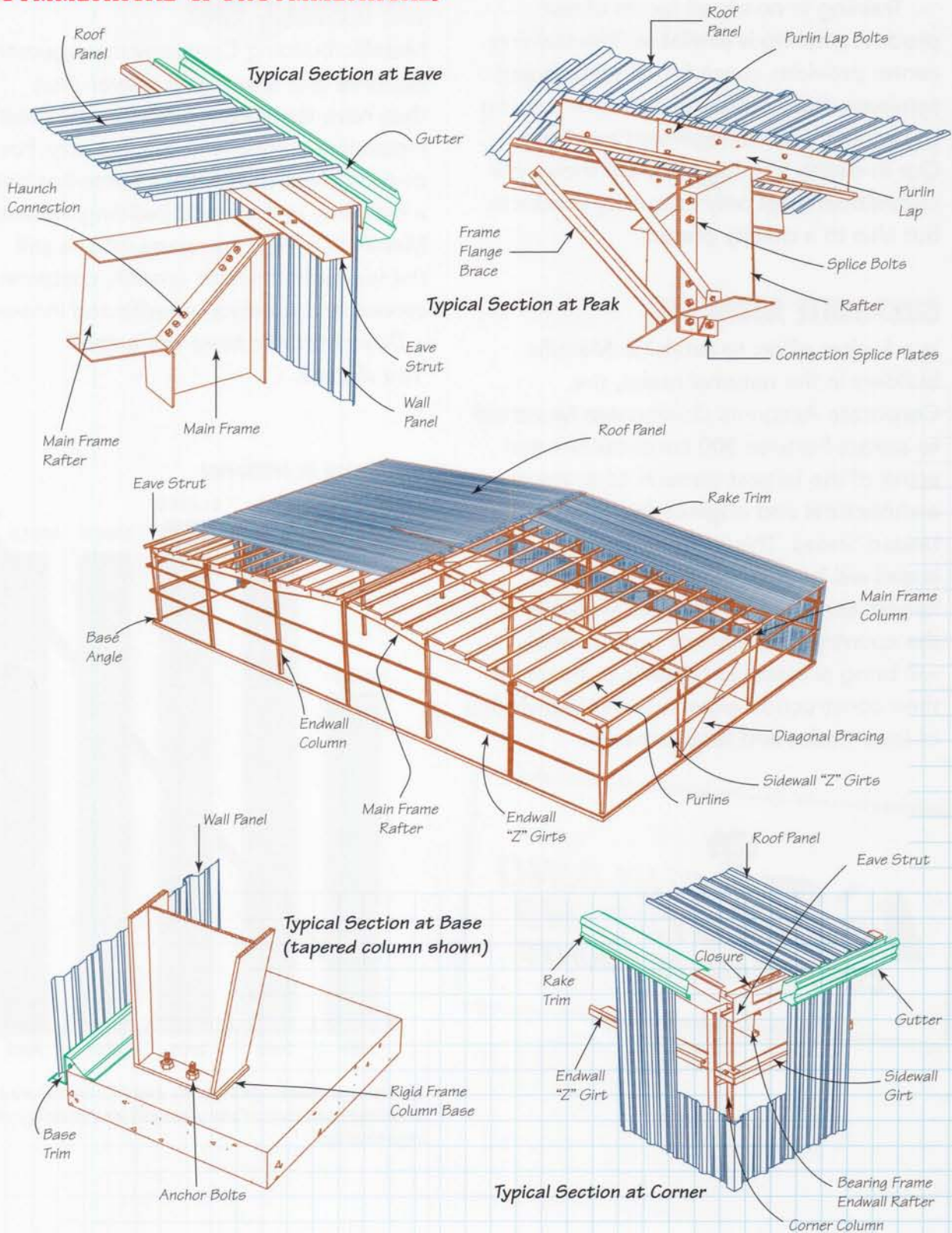
(Sales in Millions)



The steady growth of Metallic and NCI continues to be a leading indicator of the strength and stability of the organization.

« GABLE »

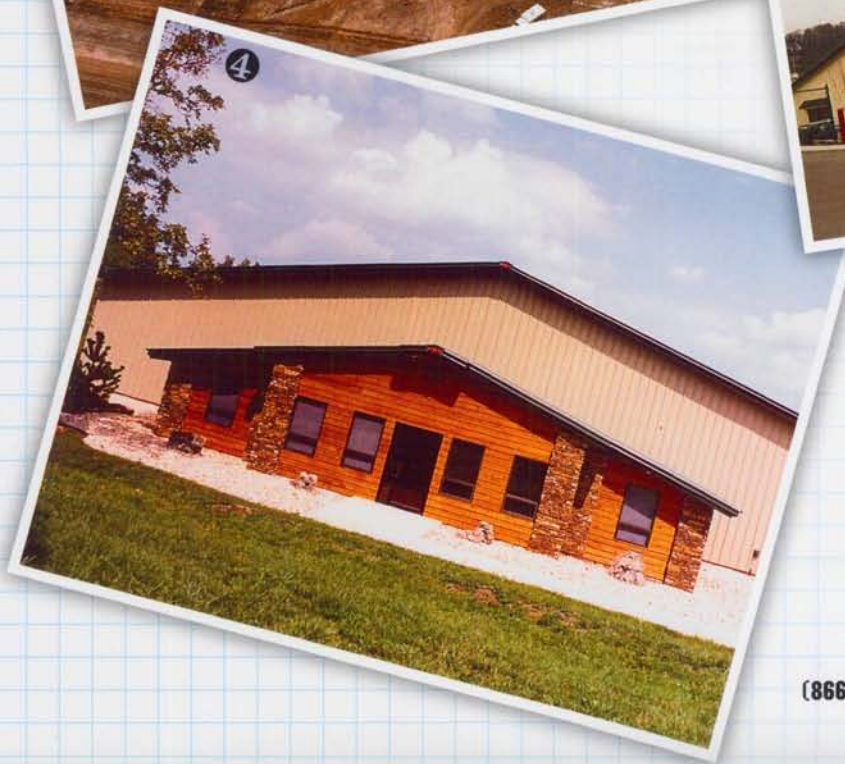
(SYMMETRICAL & UNSYMMETRICAL)



For illustration purposes only. Not to scale. Panels and trim may vary.

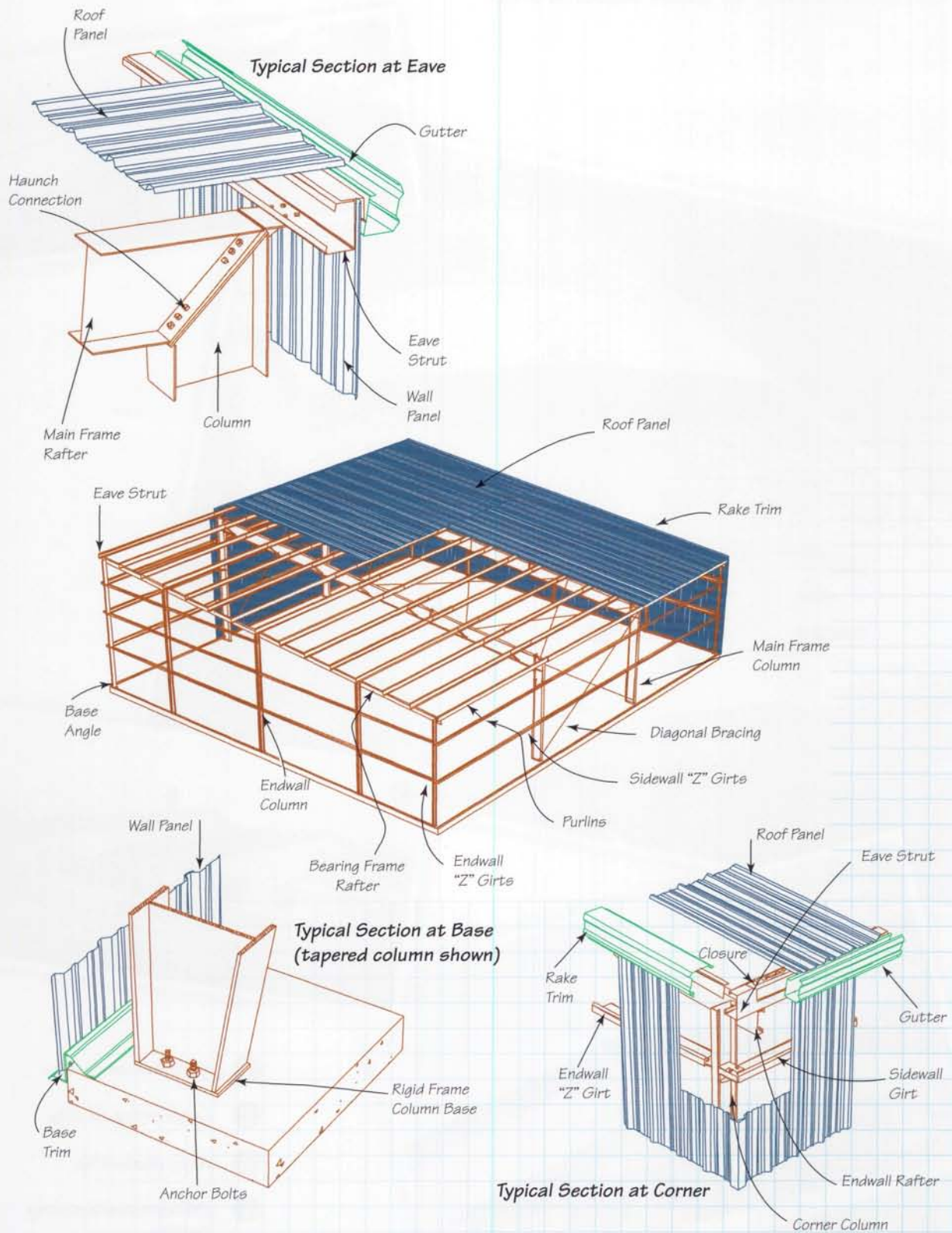
« GABLE »

(SYMMETRICAL & UNSYMMETRICAL)



- ① *Distribution facility.*
- ② *Large office facility.*
- ③ *Auto dealership.*
- ④ *Office/manufacturing facility.*

« SINGLE SLOPE »



For illustration purposes only. Not to scale. Panels and trim may vary.

« SINGLE SLOPE »



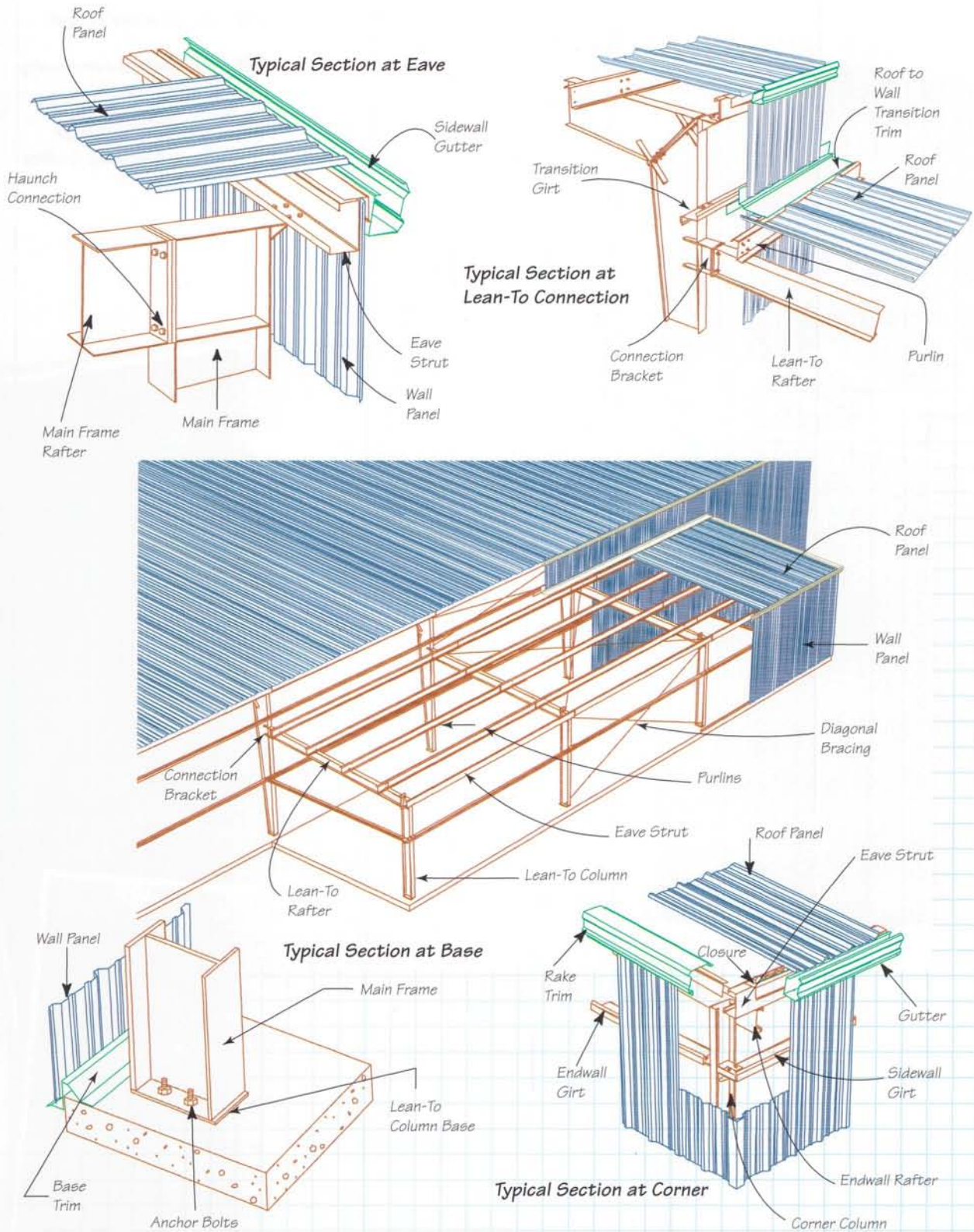
① *Single slope school.*

② *Church and community center.*

③ *Interior framing of manufacturing facility.*



« LEAN-TO »



For illustration purposes only. Not to scale. Panels and trim may vary.

« LEAN-TO »



- ① *Lean-to on manufacturing facility.*
- ② *Lean-to church.*
- ③ *California fairgrounds.*
- ④ *Interior of manufacturing facility.*

« COMMUNITY / CHURCHES »



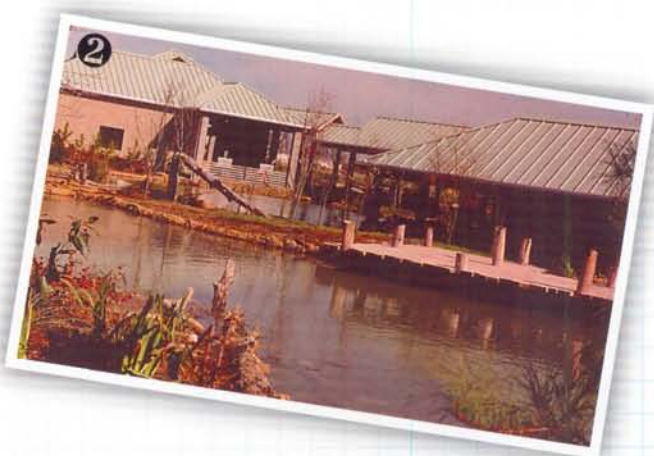
The domination of custom engineered building systems in the religious and community markets is a direct result of the system's design flexibility and its

competitive cost of construction.

Metal building systems provide for a low cost, low maintenance and architecturally appealing facility. Classrooms, multi-purpose gymnasiums and offices are a large part of the overall religious campus. The flexibility of these systems allows for diversification in design and appearance, from basic structures to structures with sweeping expanses of glass, brick, stone or pre-cast concrete.

FEATURES & BENEFITS

- » End use flexibility
- » Speed and ease of installation
- » Reduced maintenance costs
- » Long-term energy savings
- » Ease of expansion
- » Multi-purpose usage
- » Faster occupancy
- » Material longevity



1 Education administration facility.

2 Community activity center.

3 Church school.

4 National Guard headquarters.

« RETAIL / COMMERCIAL »



From standalone structures to commercial strip centers, retail and commercial buildings must be aesthetically inviting and customer friendly. Colorful

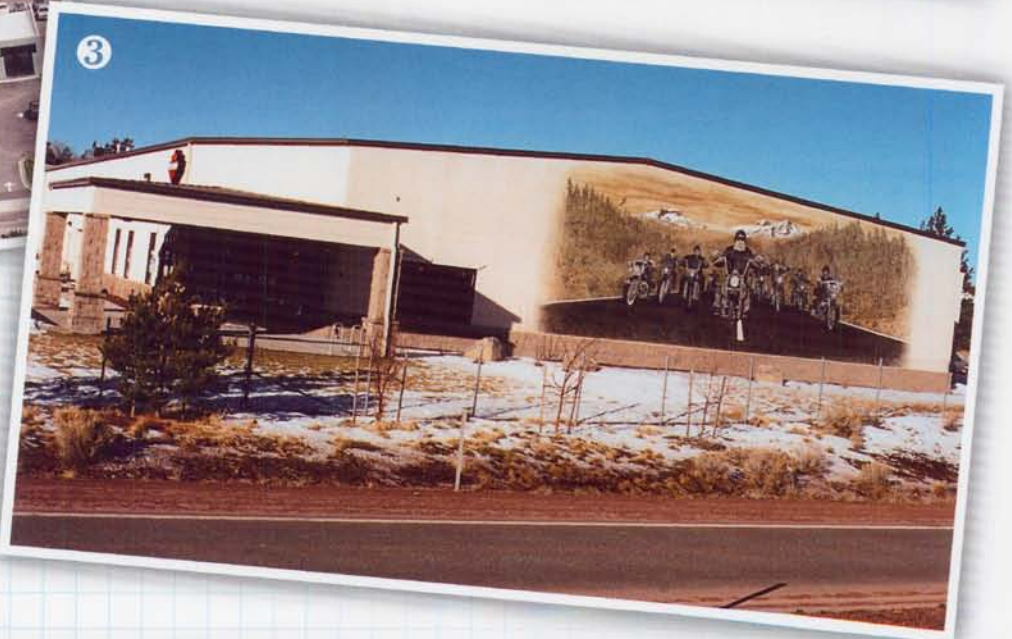
facades and roofs enhance eye appeal and Metallic offers 35 panel colors to attract shoppers.

Metal construction is also well suited for brick and tilt wall construction. And, use of the new Long Bay System is perfect for retail centers. It allows for open, uncluttered interiors with few interior columns.

Metallic's custom facades and wide variety of colorful roof trims create retail, office and commercial structures that are more visually appealing. With 100 wall panel profiles, Metallic structures are distinctive and attractive.

FEATURES & BENEFITS

- » Versatile design
- » Economical construction
- » Pleasing appearance
- » Speed of erection
- » Ease of expansion
- » Reduced maintenance costs
- » Thermal efficiency
- » Fewer interior columns
- » Excellent compatibility with collateral materials for that polished look.



- 1 Retail strip center.
- 2 Recreational center.
- 3 Motorcycle dealership.
- 4 Cadillac dealership.

« AVIATION BUILDINGS »



Metallic aircraft hangars are individually engineered to meet building code and customer requirements and are flexible enough to satisfy even the most

complex aviation needs.

Clear span design provides column-free interiors for wide-open floor space. Eave heights are available that can accommodate today's larger aircraft. These structures allow for a variety of door options including bi-fold, bi-parting and stack leaf design.

By combining the metal building system with conventional exterior materials such as brick, stone or glass, the structure can be aesthetically appealing while providing the perfect solution to aviation needs.

FEATURES & BENEFITS

- » Column-free open areas
- » Design flexibility
- » Fast, easy construction
- » Reduced maintenance costs
- » High quality hangar doors
- » Energy efficient
- » Aesthetically appealing



- 1 *Gable symmetrical hangar.*
- 2 *Commercial jet hangar.*
- 3 *Interior view of corporate facility.*
- 4 *Corporate aviation facility.*



« MANUFACTURING / CRANE »



As businesses grow and change, the demand for new facilities to be erected as quickly and economically as possible is one that Metallic has satisfied repeatedly. Each Metallic building is individually engineered and designed to meet the building owner's specific end-use requirements.

Metallic crane buildings are designed to satisfy the needs of heavy industrial and materials movement applications. Crane systems must adhere to stringent specifications as indicated by the Crane Manufacturers Association of America. Metallic understands crane usage, frequency and severity classifications.

FEATURES & BENEFITS

- » Exceeds standard loading and size requirements
- » Design integrity to meet specific needs
- » Erection time reduced by one-third
- » Allows for easy future expansion
- » Conservative design philosophy
- » Thermal efficiency



- 1 *Manufacturing facility.*
- 2 *Interior crane building under construction.*
- 3 *Exterior crane building nearing completion.*



« LONG BAY SYSTEM® (LBS) »



The Metallic Long Bay System (LBS) is the first new product in steel roof framing in over 30 years. The new Long Bay System opens up the engineered building market and enables

Metallic builders to compete in the conventional and tilt wall arena.

LBS provides a clean, uncluttered interior. Fewer interior columns maximize areas for rack or palletized storage while reducing foundation costs. Because there are fewer parts and pieces and, most importantly, fewer connection bolts and no field welding, erection is easier and faster than conventional bar joist construction.

Open web truss sub-framing provides roof support and simplifies the installation of sprinkler, mechanical and electrical systems. LBS is ideal for manufacturing, warehousing/distribution, and retail applications requiring large areas of open floor space. The result is a lightweight, strong framing system that is superior to conventional structures with the inherent benefits of a metal building system.

Most importantly, on-time completion with reduced overall costs is possible with the LBS system. The LBS system practically eliminates the costly, time consuming field welding associated with conventional bar joist systems. Metallic is the single source for steel and building design allowing for a more consistent and controlled building schedule. Get back in control with LBS.

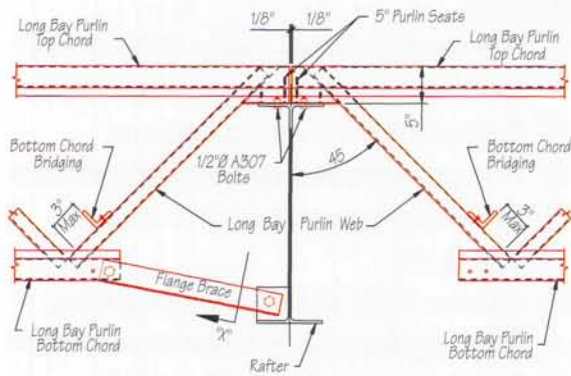
FEATURES & BENEFITS

- » Fast erection
- » Bolts up on the ground
- » Bay spacing up to 65 feet
- » Usable with B Deck, Built Up or Single Ply
- » Especially effective with standing seam roof systems
- » Lighter and stiffer than conventional products
- » Uses less bridging
- » Bolts to main frame, meets OSHA requirements
- » Economical erection
- » Reduces concrete costs - fewer footings
- » Shortens construction time
- » Single source responsibility

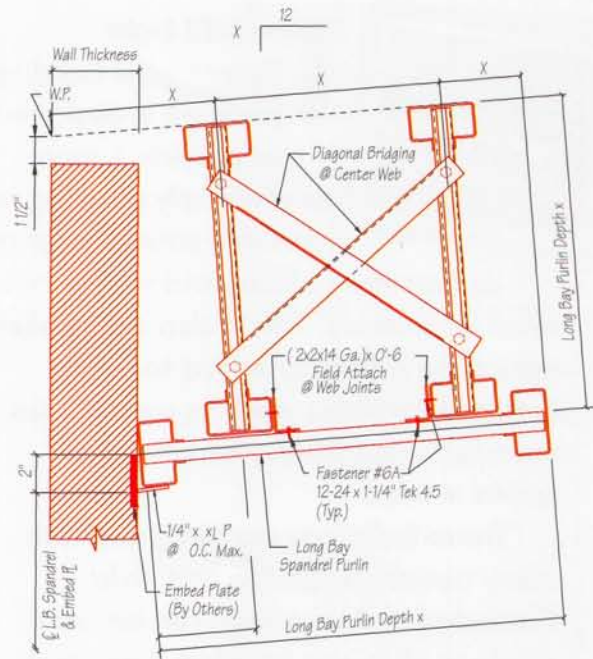
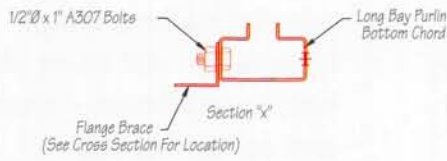


- 1 LBS bolts up complete.
- 2 Long Bay manufacturing structure.
- 3 LBS lifted in place in modules.

« LONG BAY SYSTEM® (LBS) »

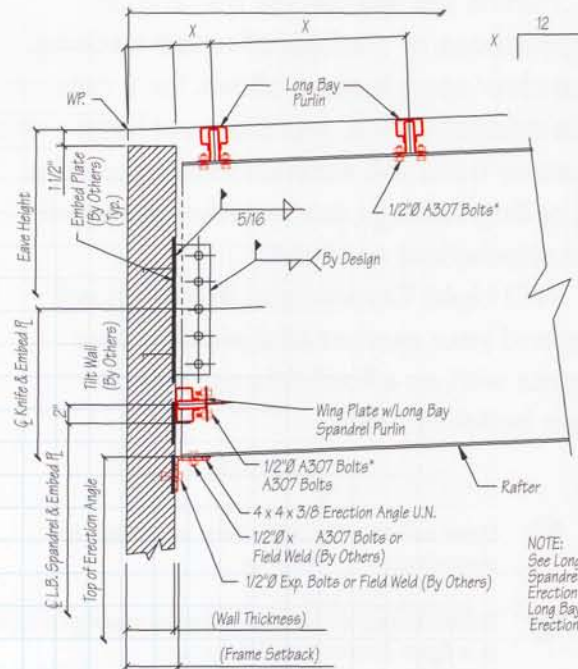


Flange Brace Connection Detail



Long Bay Spandrel Purlin At Sidewall Masonry Wall

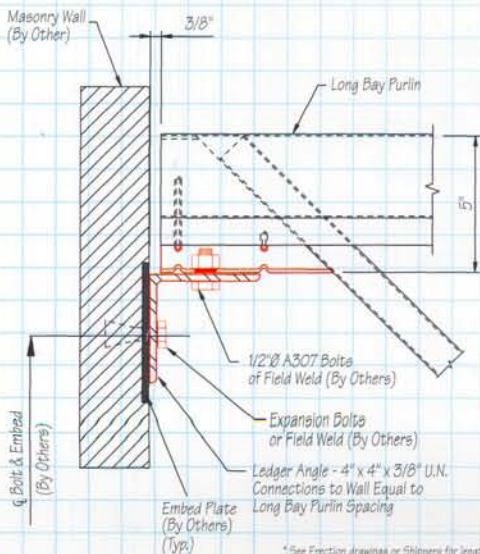
NOTE: Long Bay Spandrel Purlin Must Be Assembled on Ground, 3 Pieces Lifted As One Piece.
See Long Bay System Spandrel Assembly Erection Guide For Detailed Assembly Instructions.



NOTE:
See Long Bay System Spandrel Assembly Erection Manual For Long Bay Spandrel Erection.

Long Bay Spandrel At Main Frame (W/ Masonry Wall) (Low Side)

* See Erection drawings or Shippers for length.



Long Bay Purlin At Masonry Parapet

* See Erection drawings or Shippers for length.

« NCI LIGHT COMMERCIAL BUILDINGS »



The NCI Light Commercial Building package is designed to provide a more aesthetically pleasing and versatile structure for one

or two story offices and standalone retail businesses. This is also an excellent option for offices attached to large industrial facilities, such as warehouses, manufacturing plants, hangars and sports arenas.

These buildings are designed with many options in design and style. Cathedral or flat ceilings can be used singly or all in one building. Eave and rake overhangs are standard and allow for some protection from the elements. Any exterior wall applications can be used such as brick, stone, steel, stucco or EFIS.

Purlins are spaced for metal roof applications or traditional wood decking. The clear span feature allows for a column free interior space, just like your local video store or bank. All exterior steel studs and all ceiling furrings are included standard for attachment of drywall.

NCI Light Commercial Buildings will expand your market and provide your clients with an affordable solution to their building needs.

① *Light commercial structure attached to manufacturing building.*

② *NCI's Classic Steel Frame Home headquarters is a light commercial structure.*

FEATURES

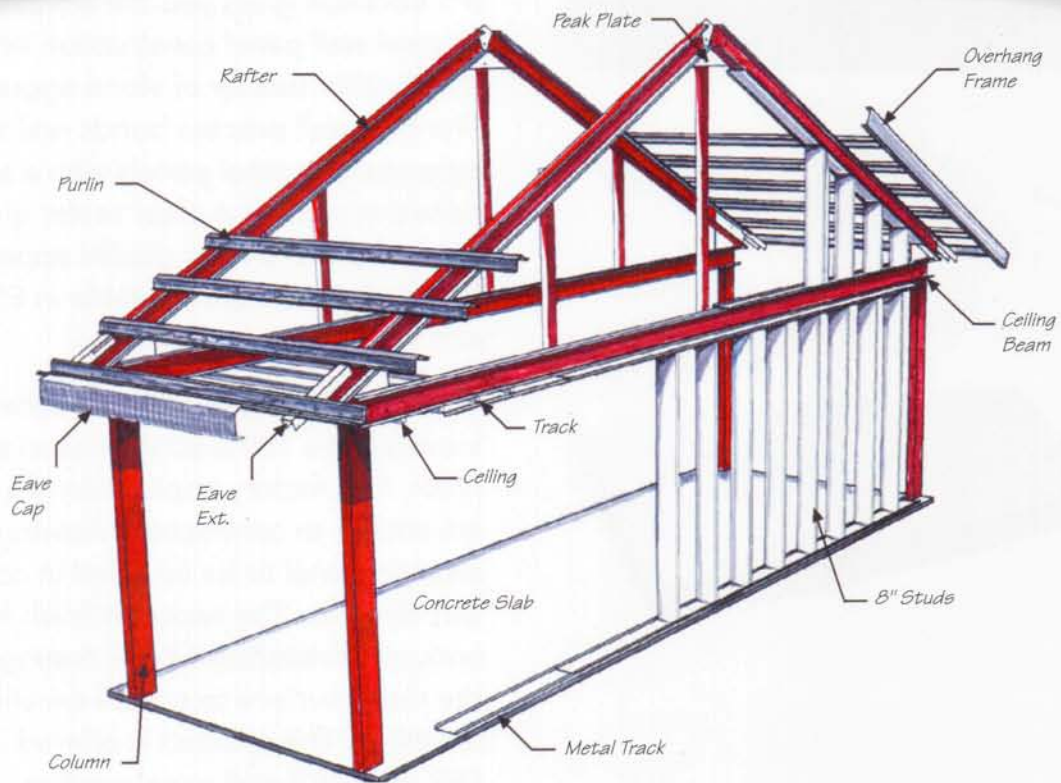
- » Hip roof pitches - up to 8:12 slope
- » Eave and rake overhangs standard
- » Conventional roofing options
- » Flat or cathedral ceiling applications (Both can be utilized in the same structure)
- » Interior walls are non-load bearing allowing for easy interior modification
- » Ready for interior ceiling and exterior wall coverings
- » 8" exterior wall studs allow for R-30 batting insulation - energy efficient and noise reduction.



APPLICATIONS

- » Video stores
- » Banks
- » Strip centers
- » Offices
- » Medical facilities
- » Copy centers
- » Restaurants
- » Auto repair shops

« NCI LIGHT COMMERCIAL BUILDINGS »



- ① *Light commercial retail center under construction.*
- ② *Ranch activity center.*
- ③ *Free standing insurance office.*

« INSULATED PANEL SYSTEMS (IPS) »

Insulated Panel Systems (IPS) manufactures a broad product line of insulated panels for wall and roof applications. The insulation is foamed-in-place at the factory and sandwiched between two steel sheets for exterior beauty and performance. IPS panels are offered from 1" to 5" thick depending upon



the project's thermal requirements. These panels come in a variety of colors, including a rockwall texture and a textured finish. IPS sells insulated panels to builders and contractors that cater to the specialty markets, such as food and beverage producers, distributors and wholesalers.

ROCKWALL COATED PRODUCTS -

IPS Rockwall gives you the advantage of steel wall panel construction with the durable beauty of stone aggregate. The Rockwall process bonds real stone aggregate to steel panels with a super adhesive system. A clear sealer gives the finished panel a crisp glazed appearance. Rockwall panels are available in ESP, IPP and EWP panel profiles.

TEXTURED FINISH - IPS has recently introduced a 100% acrylic based textured finish. This factory application is a major advantage to contractors allowing the finished panel to be installed in cold and wet climates. The textured finish has endured freeze/thaw cycle testing on the metal surface to ensure excellent adhesion. This product is offered in IPP, ESP and EWP wall panel profiles. Add architectural appeal, thermal efficiency, strength and endurance to your project with IPS Textured Finish insulated panels.

SSP ROOF PANEL - The standing seam roof panel is ideal for all temperature control roof systems. With IPS's patented Versalok® sidelap, these roofing panels are snapped together before being mechanically seamed. SSP panels are available in 36" widths and are manufactured in 7 to 5" thicknesses.

« INSULATED PANEL SYSTEMS (IPS) »



RWP ROOF / WALL PANEL - Designed to be used as a roof or wall panel on metal building framing, IPS offers this product with overlapping ribs and exposed fasteners. The panel is designed to give 36" coverage and is manufactured in 1¹/₂" to 5" thicknesses.



ESP WALL PANEL - This architecturally pleasing panel is ideal for commercial applications. Its low profile exterior facing and offset lap joint with concealed fasteners give it an attractive appearance for vertical applications. The panel is designed to provide 36" wide coverage and is manufactured in 2" to 5" thicknesses.



IPP WALL / PARTITION PANEL - Designed primarily for interior applications, IPP features an attractive flat embossed profile in 2" to 5" thicknesses. The panel also serves well as an exterior wall panel. Its concealed fastener joint retains high thermal properties; easy-to-maintain finishes enhance your building's appearance. IPP is designed to module on 36" centers and has a USDA-approved finish as a standard interior skin coating.



EWP WALL PANEL - The EWP panel offers contemporary styling in an easily installed panel manufactured in 2" to 5" thicknesses. Its ribbed profile adds a strong vertical accent ideal for metal building applications. Both exterior and interior metal skins have a stucco embossed pre-painted finish. EWP uses concealed fastener joints and modules on 36" centers.

« STRUCTURAL / HYBRID »

The construction of its 157,000 square foot structural steel facility enables Metallic to manufacture oversize trusses, large crane beams, spandrels and all types of support materials.

With the most modern equipment in the industry, Metallic can provide one-stop steel shopping for the big buildings - especially

hybrid projects that

combine engineered metal buildings with conventional construction.

Typical structural projects include: schools, theaters, arenas, athletic facilities, water treatment plants, power plants, hotels, religious centers, hangars, refineries, parking garages, warehouses and many more.

Metallic hybrid structures blend the advantages of metal building system construction with the strength of conventional steel members. Hybrid structures meet heavy loading requirements by providing the most effective design possible.

Our structural shop allows Metallic to build the big buildings. This is a dream for metal builders - one stop, one price and one source. The freight savings are tremendous when the entire steel structure is shipped from one location.

When it comes to large, tough construction jobs, the hybrid building approach provides a cost-conscious alternative.

FEATURES & BENEFITS

- » Coordination - all materials shipped together, arrive together
- » Freight savings - one source, one delivery
- » Quotation time - one call, one price
- » Single source responsibility
- » Fast, easy construction



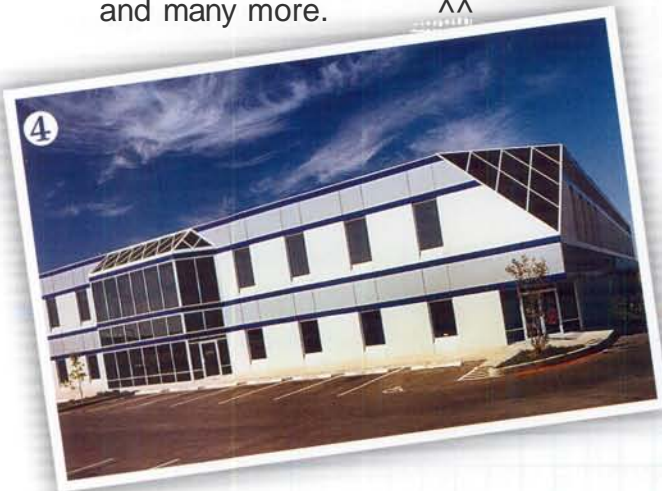
1 Huge truss prepared for erection.



2 Three story medical center.



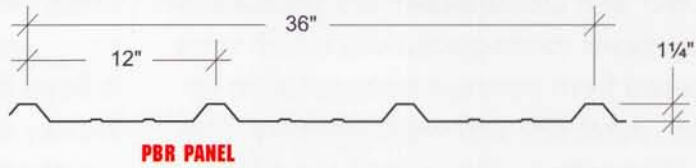
3 Hangar under construction.



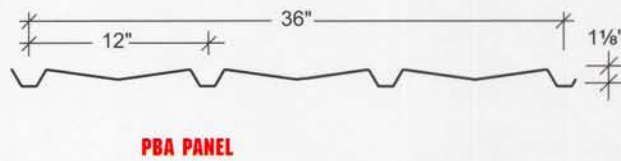
4 Two story office complex.

« ROOF & WALL PANELS »

RIB PANEL - ROOFS, WALLS, LINER, PARTITIONS, AND SOFFITS

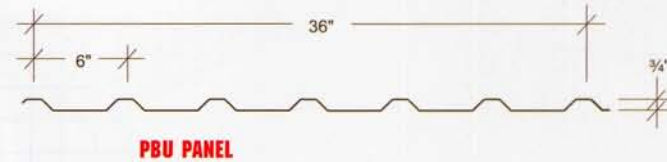


ARCHITECTURAL PANEL - WALLS, LINER, AND PARTITIONS

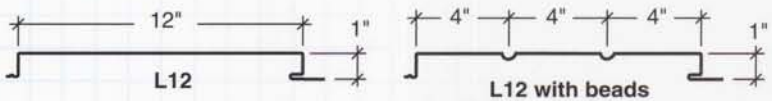


Available in selected plants only.

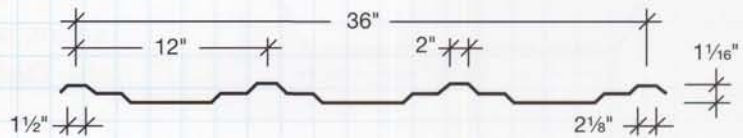
UTILITY PANEL - WALLS, LINER, PARTITIONS, AND SOFFITS



ARTISAN PANEL - LINER, AND SOFFITS



RETRO-R® PANEL - ROOFS, WALLS, LINER, PARTITIONS, AND SOFFITS

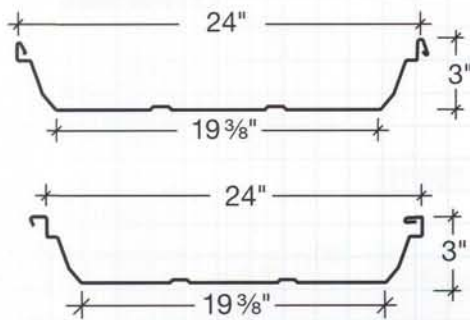
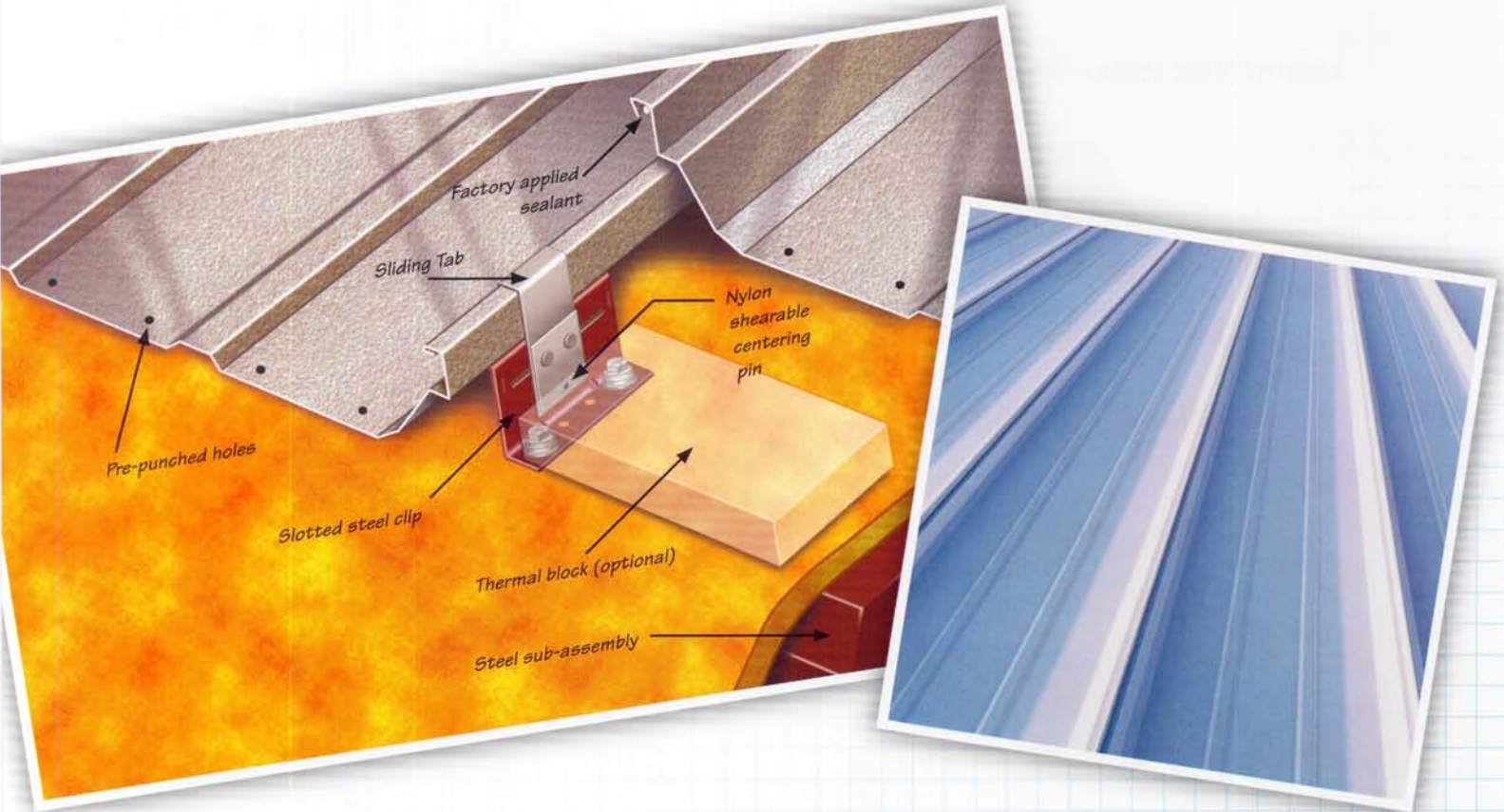


« STANDING SEAM SOLUTIONS »

ULTRA-DEK® AND DOUBLE-LOK®

Ultra-Dek® and Double-Lok® are trapezoidal standing seam roofing solutions which were engineered from concept to installation for strength, durability and weatherability. The seams of standing seam panels are a full

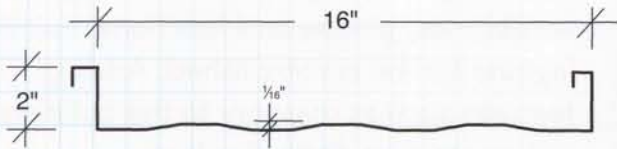
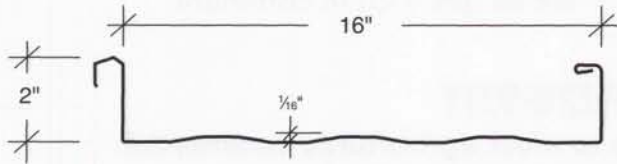
three inches above the lowest part of the panel, well above the water level as it flows off of the roof. The seams have factory-applied mastic to ensure a secure, weathertight seam.



Ultra-Dek®: Ultra-Dek is seamed with an interlocking snap seam making installation faster and easier.

Double-Lok®: Double-Lok is machine joined at the edges with a true 360-degree seam, which is mechanically locked with the Double-Lok seamer.

« STANDING SEAM SOLUTIONS »

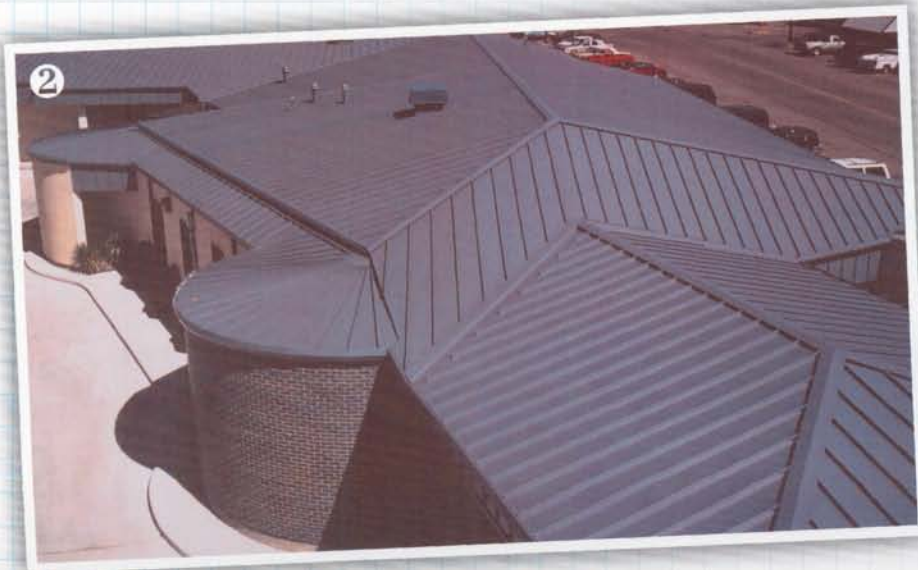


SUPERLOK® BATTENLOK®

SuperLok and BattenLok standing seam roof systems blend the aesthetics of the architectural panel with the strength of a structural panel. These panels have earned a number of UL and Factory Mutual uplift ratings to ensure reliability and performance.

SuperLok®: SuperLok is a field machine seamed panel that combines a slim rib with exceptional uplift resistance. This panel has been designed for the most rigorous of conditions. The panel features a factory installed hot-melt mastic to ensure weathertight seams. Striations are optional and encouraged for added aesthetic value. SuperLok must be installed on a roof slope of 1/2:12 or greater.

BattenLok®: BattenLok is also a field machine seamed system that is capable of transitioning from roof to fascia applications. The factory installed hot-melt mastic system is also a standard feature to ensure a weathertight seam. BattenLok must be installed on a roof slope of 1/2:12 or greater.



- 1 SuperLok SSR on deluxe apartment complex.
- 2 BattenLok example of hips and valleys.

« METALLIC EXPRESS »

QUALITY COUNTS, AND SPEED IS KEY

We know that when you need a building, you need it quickly and economically—but without any sacrifice in quality. The best route to project completion? *Metallic Express*.

When it comes to speed, no one beats *Metallic Express* and our years of experience. After all, we know the quicker your project is completed, the sooner occupancy occurs.

But speed isn't everything. Rest assured, we will fabricate your building with the utmost care, using quality materials and expert labor. Our engineers design every building to comply with local code requirements. And all of our *American Institute of Steel Construction* certified manufacturing plants utilize the industry's most advanced equipment.

Speed. Quality. Value. Looks like we've got a lot in common!

DESIGN FLEXIBILITY

Express buildings are adaptable to most agricultural, commercial, institutional and some residential applications.



Flexible System: Using combinations of optional building widths, lengths and eave heights along with a wide range of accessories, unique and functional building layouts can be accomplished. Adding features such as masonry to the building will create that distinctive look.

Fast Track System: The quickest route to project completion is the *Metallic Express Building*. Owners get their buildings faster, and completion and occupancy occurs sooner. A satisfied owner is the result of the speed and quality produced by this *Fast Track System*.

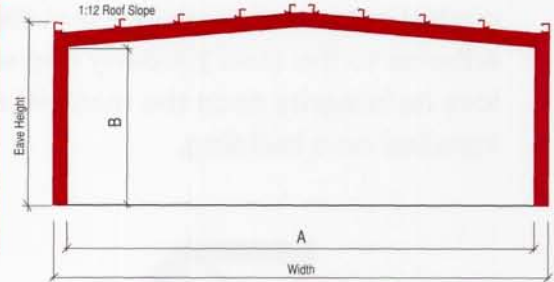
Value System: Meeting the demands of price and timely production while maintaining a high quality product builds high value. With accessories such as slimline windows as shown here, more value is added to the facility. Value, an ideal solution for your next building project.

« METALLIC EXPRESS »

SPECIFICATIONS

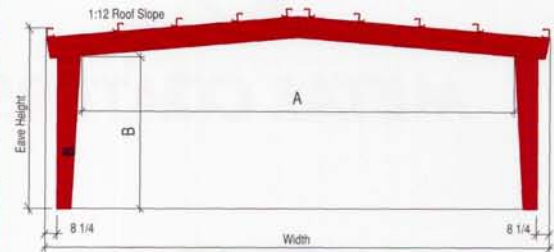
STRAIGHT COLUMN*

NOMINAL SIZE		DIMENSIONS (All figures rounded)							
Bldg Width	Eave Height	12 PSF Frame Live Load		21 PSF Frame Live Load		30 PSF Frame Live Load		40 PSF Frame Live Load	
		A	B	A	B	A	B	A	B
30'	10'	28'-7"	8'-5"	28'-7"	8'-5"	28'-6"	8'-4"	28'-7 ³ / ₄ "	8'-3"
30'	12'	28'-7"	10'-5"	28'-7"	10'-5"	28'-7"	10'-4"	28'-7 ³ / ₄ "	10'-3"
30'	14'	28'-7"	12'-4"	28'-7"	12'-4"	28'-6"	12'-4"	28'-7 ³ / ₄ "	12'-3"
30'	16'	28'-6"	14'-4"	28'-6"	14'-4"	28'-6"	14'-4"	28'-7 ³ / ₄ "	14'-3"
40'	10'	38'-6"	8'-4"	38'-7"	8'-3"	37'-10"	8'-3"	37'-10 ³ / ₄ "	8'-1 ⁷ / ₁₆ "
40'	12'	38'-6"	10'-4"	38'-7"	10'-3"	37'-10"	10'-3"	37'-10 ³ / ₄ "	10'-1 ⁷ / ₁₆ "
40'	14'	38'-6"	12'-4"	38'-7"	12'-3"	37'-10"	12'-3"	37'-10 ³ / ₄ "	12'-1 ³ / ₈ "
40'	16'	38'-6"	14'-3"	38'-7"	14'-3"	37'-10"	14'-3"	37'-10 ³ / ₄ "	14'-1 ³ / ₈ "



TAPERED COLUMN*

NOMINAL SIZE		DIMENSIONS (All figures rounded)							
Bldg Width	Eave Height	12 PSF Frame Live Load		21 PSF Frame Live Load		30 PSF Frame Live Load		40 PSF Frame Live Load	
		A	B	A	B	A	B	A	B
50'	12'	46'-0"	10'-2"	45'-3"	9'-9"	44'-7"	9'-5"	44'-7"	9'-5 ⁵ / ₈ "
50'	14'	46'-0"	12'-2"	45'-3"	11'-9"	44'-7"	11'-5"	44'-7 ¹ / ₈ "	11'-5 ⁵ / ₈ "
50'	16'	46'-0"	14'-2"	45'-3"	13'-9"	44'-7"	13'-5"	44'-7 ¹ / ₈ "	13'-5 ⁵ / ₈ "
50'	20'	46'-0"	17'-11"	45'-3"	17'-9"	44'-7"	17'-5"	44'-7 ¹ / ₈ "	17'-5 ⁵ / ₈ "
60'	12'	55'-2"	9'-9"	54'-6"	9'-5"	54'-6"	9'-5"	54'-6 ¹ / ₄ "	9'-5 ³ / ₈ "
60'	14'	55'-2"	11'-9"	54'-6"	11'-5"	54'-6"	11'-5"	54'-6 ¹ / ₄ "	11'-5 ³ / ₈ "
60'	16'	55'-2"	13'-9"	54'-6"	13'-5"	54'-6"	13'-5"	54'-6 ¹ / ₄ "	13'-5 ¹ / ₄ "
60'	20'	55'-2"	17'-9"	54'-6"	17'-5"	54'-6"	17'-5"	54'-6 ¹ / ₄ "	17'-5 ³ / ₈ "



* These dimensions are approximate. Final design dimensions can vary.

AVAILABLE COLORS

- » Hawaiian Blue
- » Fern Green
- » Koko Brown
- » Charcoal Gray
- » Saddle Tan
- » Polar White
- » Desert Sand
- » Colony Green
- » Light Stone
- » Gallery Blue
- » Crimson Red
- » Burnished Slate
- » Aztec Gold
- » Ash Gray
- » Rustic Red

ACCESSORIES

- » Horizontal Slide Windows
- » Walk Doors
- » Wall Louvers
- » Ridge & Circular Ventilators
- » Slimline Windows
- » Light Transmitting Panels
- » Framed Openings
- » Pipe Flashings
- » Purlin Extensions
- » At-Eave Canopies
- » Rigid Frame Endwalls
- » Walls Open For Collateral Materials

« COATERS – COLORS »

Our coating divisions clean, paint and slit coils. This service operates under the watchful eyes of strict quality control personnel to ensure that the paint adheres to the steel properly and will not lose its integrity once the material is installed on a building.



METAL COATERS®



METAL-PREP®



DOUBLECOTE

COATINGS & FINISHES

ROYAL K-70® coatings are formulated with Kynar 500®/Hylar 5000® polyvinylidene fluoride resin and modified with a proprietary resin for toughness. The long-life finish offers the ultimate in color retention, film flexibility and durability.

DURA-20® offers optimum exterior protection and resistance to chemical corrosion and ultraviolet radiation. This coating also offers excellent chalk, fade and mar resistance. Dura-20® is a modified siliconized polyester paint system. Royal K-70® is a fluorocarbon paint system. Gloss of the painted metal is 10 or less.

GALVALUME PLUS® has a corrosive resistant aluminum-zinc alloy applied by a continuous hot-dipping process that conforms to ASTM-792 in coating class AZ55. Galvalume Plus® has a standard clear-acrylic coating on both sides that is highly resistant to stains and smudges from handling and installation.

For special color requirements, contact your District Manager or Sales Service Manager.

Note: Flat surfaces may display slight waviness. This phenomenon is known as "oil canning" and can be caused by steel mill production tolerances, fabrication tolerances and/or framing misalignment, and is not cause for rejection.

Not all panels are available in all colors.

DURA-20® and ROYAL K-70® are registered trademarks of NCI Building Systems, Inc.
KYNAR 500® is a registered trademark of ELF Atochem. HYLAR 5000® is a registered trademark of Ausimont.

« THE METALLIC EDGE »

Today's *metal building system* relies on technological design capabilities and state of the art production methods to meet the quality demands of our customers. New software programs, design processes and manufacturing improvements have become standard events in today's business environment.

Metallic is keeping up with these advancements and instituting many of its own innovations and inventions.

Builder benefits include:

- » Custom engineering
- » Cost efficiency
- » Cost predictability
- » Expandability
- » Design flexibility
- » Speed of construction
- » Energy efficiency
- » Low maintenance
- » Attractive aesthetics

Metallic Building Company enhances the benefits of metal building systems by offering our Builders and end-users:

- » All plants AISC certified
- » Over 50 years of experience
- » 3.5 million square feet of manufacturing space
- » Computerized pricing and drafting
- » Single source for metal building products
- » Strategically located manufacturing facilities
- » Pricing, product, sales and erection training

Everyone is strong in a strong economy. However, Metallic maintains its strength during all economic periods because of constantly improving its products and services, the introduction of new products, and the ability to provide all of the steel for metal building, hybrid and structural steel projects.

In today's marketplace, dedication to service and quality keeps Metallic Building Company ahead of the competition. When you consider the advantages of metal building systems and the resources and experience of Metallic Building Company, you truly have the Metallic Edge.



1 Office warehouse structure.

2 Two story office building.



« SINGLE SOURCE »



STEEL SYSTEMS - SELF-STORAGE

A leader in the self-storage building industry, Steel Systems provides the same Metallic quality in the manufacturing of single and multi-story self-storage facilities. Steel Systems storage facilities are available with climate-controlled designs. Interior partitions and roll-up doors are also a part of Steel System's product offering.



NCI LIGHT COMMERCIAL BUILDINGS

The NCI Light Commercial Building package is designed to provide a more aesthetically pleasing and versatile structure for one or two story offices and standalone retail businesses. This is also an excellent option for the offices attached to large industrial facilities such as warehouses, manufacturing plants, hangars and sports arenas. Utilizing the NCI commercial building concept, Metallic can produce buildings that fit this application faster and at reduced cost.



CLASSIC STEEL FRAME HOMES

This division leads the industry in the exciting revolution towards steel framing in residential housing. Classic homes are built with a unique system using heavy gauge "red iron" steel columns that are factory engineered to fit together precisely. Classic Steel Frame Homes has over 100 standard plans and an engineering staff to produce standard, modified and totally custom steel homes.



DBCI & ABLE - DOORS

DBCI is the premier manufacturer of mini-storage roll-up doors and interior partitions for the self-storage industry. **Able Door Manufacturing** manufactures a wide variety of residential and commercial/industrial garage doors. Both DBCI and Able adhere to the highest standards of quality and service.



« SINGLE SOURCE »



COATERS

Our coating companies clean, paint and slit steel coils for our component and building divisions. This coating service operates under the watchful eyes of strict quality control personnel to ensure that the paint will adhere to the steel properly and will not lose its integrity once the material is installed on a building. This commitment to our coating division guarantees Metallic coil availability and the highest quality in the industry.

IPS - INSULATED PANELS

IPS manufactures a complete line of insulated panels for both wall and roof applications. Panels are filled with non-CFC polyurethane modified isocyanurate with R-values up to 40 and are constructed of 22, 24, and 26 gauge steel pre-painted sheets. IPS has also introduced state of the art Rockwall finish and textured finish panels to create a more aesthetically pleasing look.

STRUCTURAL STEEL

Metallic utilizes the new 157,000 square foot Class 'A' structural shop to support its building efforts. Whether the project requires Class 'A' or hybrid construction, Metallic has a solution. The Houston structural shop is the only one of its kind in the metal building industry. Metallic has manufactured schools, churches, manufacturing facilities, power plants and a number of hybrid facilities utilizing this state-of-the-art facility.

MBCI - COMPONENTS

MBCI offers the largest selection of metal roof, wall, fascia, and soffit systems in the industry and includes 35 standard colors and over 100 panel profiles. Complete systems with trim and color matched accessories are available for the architectural, commercial, industrial, institutional, residential and agricultural markets. The company offers five separate structural standing seam roof systems in both field seam and snap-together systems, and in a vertical and trapezoidal leg option.